



Led Module Board

Unique new circuit design!
300*300mm

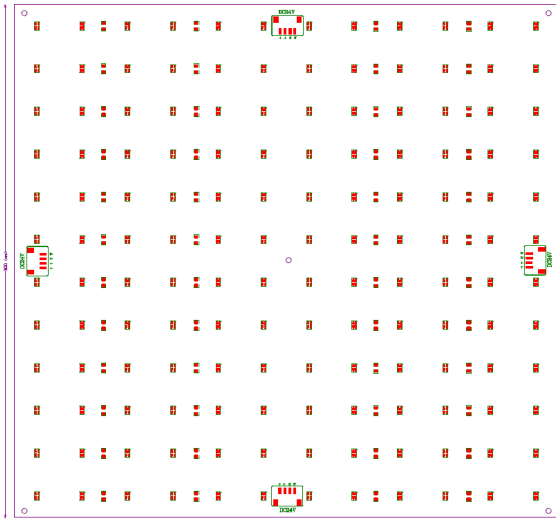
WK LED LMB

Benefits:

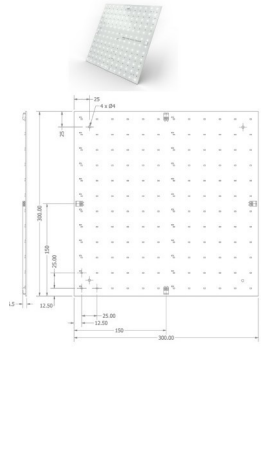
Extreme reliable Epistar 2835 Dual White SMD led's
Made by SMT robot FPCB copper strip, dissapating heat better!
2 year warranty
Usefull lifetime > 30.000 hours
144 led's at 24V
0-10V Dimmable
IP20

Applications:

Many applications for backlighting



Specifications:

WK LED LMB	Description	Accessories
	<p>Led's: SMD Dual CCT 2835 CCT: 2200K and 3000K Voltage: DC 24V Current: 16mA (0,2W+0,2W) CRI: >90 Size: 300x300mm Power: 17W per colour Viewing angle: 120 degrees IP value: IP20 Housing: PLS Colours: Warm white, White, Red, Green, Blue and Dual CCT Brightness: 5500 lumen total</p>	<p>LED driver 30-300W 0-10V dimmer interface</p>